

# "Tools for Eliminating Mice in Multifamily Housing"

**December 14, 2017**

Bobby Corrigan, Ph.D.

Urban Rodentologist  
RMC Pest Management Consulting.

**Twitter: # Rodentologist**

Controlling this *public health* urban rodent takes cooperation:

StopPests in Housing  
Northeastern IPM Center

HUD's Office of Healthy Homes and  
Lead Hazard Control

&

USDA's National Institute  
of Food and Agriculture.

Special Thanks

Susannah Krysko Reese

StopPests in Housing  
Northeastern IPM Center









IT'S YOURS ONLY  
NO OTHER CHOICES

PHARMACY

PHARMACY

Are we overlooking mice because it is  
so common, so ubiquitous?

(so Disney ?)





**When mice are present , they **scurry**  
over our floors, chairs, beds, kitchen,  
appliances, plates, toys and clothes**

**constantly urinating and defecating  
all the while.....**

**.....we constantly touch with our hands  
and fingers (the primary human  
appendages in which we collect and then  
ingest or absorb microbes that give us  
colds, flu, and worse).**

# **The House Mouse as a Potential Health Pest in Homes and Apartments**

Meerburg et al. (2009) in their critical review paper referencing over 600 scientific papers published during the past two decades:

“Rodents play a significant role in transmission of a large number of diseases to humans and their livestock”.

<u>Pathogen</u>	Estimated number /potential of rodent-borne diseases
Virus	17
Rickettsial	9
Bacterial	20
Protozoan	3
Cestodes	3
Trematodes	1
Nematodes	3

# Mice Inside Buildings:

Mechanical vectors and reservoirs of  
pathogenic microbes

Allergens

Congenital Toxoplasmosis

Leptospirosis

Murine Typhus

Food borne illness bacteria

Rat bite fever

Lymphocytic choriomeningitis

Others.....





Mice Inside Buildings:

Ectoparasites:

Tropical rat mites  
House mouse mite  
(Rickettsia)

# Urine droplets

➤ *3000 per 24 h.*

➤ *MUPs*

# Allergy to rodents: an update

H. Jeal and M. Jones

*Department of Occupational and Environmental Medicine, Imperial College (NHL)*

---

## Clinical & Experimental Allergy

### Summary

Allergy to rodents in the work research, pharmaceutical and employees working in this are in the workplace, there are few Rodent allergens are well char

---

## Summary

Allergy to rodents in the workplace is an important occupational health problem affecting research, pharmaceutical and toxicological sectors and can have a serious impact on employees working in this area. Despite measures to reduce aeroallergen exposures to rodents in the workplace, there are few signs that this occupational health problem is declining. Rodent allergens are well characterized and exposure–response relationships have been demonstrated to be complex. More recently, the importance of rodent allergens outside of the workplace has been demonstrated in several studies of individuals with asthma. This review focuses on rodent allergy both in the workplace and in the home and examines the complex exposure–response relationships between allergen exposure and sensitization and asthma. Risk factors for rodent allergy and mechanisms of tolerance to rodent allergens are discussed.

of  
ental  
e, Imperial  
d., London

al.ac.uk  
ones,  
ergy, 2010

---

that sensitization to inhaled aller-  
factor for asthma. All

exposures in settings outside of the workplace, allergy to rodents has become increasingly important. This review will focus on allergy to rodents in both the home and

## **Mouse Allergens in Urban Elementary Schools and Homes of Children with Asthma**

**William J. Sheehan, MD<sup>a,b</sup>, Pitud A. Rangsithienchai, MD, MA<sup>c</sup>, Michael L. Muilenberg, MA<sup>d</sup>, Christine A. Rogers, PhD<sup>d</sup>, Jeffrey P. Lane, CIH, MPH<sup>e</sup>, Jalal Ghaemghami, PhD<sup>f</sup>, Donald V. Rivard, BA<sup>g</sup>, Kanao Otsu, MD, MPH<sup>h</sup>, Elaine B. Hoffman, PhD<sup>i</sup>, Elliot Israel, MD, Diane R. Gold, MD, MPH<sup>b,k</sup>, and Wanda Phipatanakul, MD, MS<sup>a,b</sup>**

*aThe Department of Pediatrics, Division of Allergy and Immunology, Children's Hospital, Boston, Massachusetts*

*bHarvard Medical School, Boston, Massachusetts*

*cMcGaw Medical Center, Northwestern University, Evanston Program, Evanston, Illinois*

*dUniversity of Massachusetts, School of Public Health and Health Sciences, Amherst, Massachusetts*

*eFacilities Management*

*fGREAT Partners, Boston, Massachusetts*

*gRivard's Resources IPM, Waltham, Massachusetts*

*hUniversity of Massachusetts Medical School, Department of Public Health*

levels, low dog allergen levels, and primarily undetectable levels of dust mite allergens in our sampled schools. In classrooms of a subset of students with asthma, we found significantly higher levels of MUP compared to their bedrooms.

The difference in MUP levels was the most important finding of this study. These data indicate that, in our study, there was a subset of children with asthma who were exposed to significantly higher levels of mouse allergen in schools compared to their homes. It does not appear that students were bringing this allergen from their homes as it was found in very low levels throughout all homes in this area. This demonstrates that school 3 provided an exposure of mouse allergen that was independent of homes. This may play an important role in asthma morbidity for students with asthma attending this school. This study was not powered to evaluate allergen exposure and asthma morbidity, but we found that in a school with higher

# Mouse and cockroach allergens in the dust and air in northeastern United States inner-city public high schools

**Abstract** Considering that high school students spend a large proportion of their waking hours in the school environment, this could be an important location for exposure to indoor allergens. We have investigated the levels of mouse and cockroach allergens in the settled dust and air from 11 schools in a major northeastern US city. Settled dust samples were vacuumed from 87 classrooms, three times throughout the school year. Two separate air samples (flow = 2.5 lpm) were collected by 53 students over a 5-day period from both their school and their home. Mouse allergen (MUP) in the dust varied greatly between schools with geometric means ranging from 0.21 to 133  $\mu\text{g/g}$ . Mouse allergen was detectable in 81% of the samples collected. Cockroach allergen (Bla g 2) ranged from below limit of detection ( $<0.003 \mu\text{g/g}$ ) to 1.1  $\mu\text{g/g}$ . Cockroach allergen was detected ( $>0.003 \mu\text{g/g}$ ) in 71% of the dust samples. Bla g 2 was detected in 22% of airborne samples from the schools. By comparison, mouse allergen was only detected in 5%. These results indicate that the school may be an important location for exposure to allergens from mice and cockroaches and is an indoor environment that should be considered in an overall allergen intervention strategy.

**G. L. Chew, J. C. Correa,  
M. S. Perzanowski**

Department of Environmental Health Sciences,  
Mailman School of Public Health, Columbia University,  
New York, NY, USA

Key words: School; Mouse; Cockroach; Allergen;  
Airborne; Dust.

Ginger L. Chew,  
Environmental Health Science,  
Mailman School of Public Health, Columbia University,  
60 Haven Avenue, B-1,  
New York, NY 10032, USA  
Tel.: (212) 305-1692  
Fax: (212) 305-4012  
e-mail: cg288@columbia.edu

Received for review 18 February 2005. Accepted for

The house mouse **is** an important public health pest in housing.....

Not any less so than cockroach  
(allergens) or  
bedbugs.....











# **The “Types” of Mouse Infestations Inside MFH Properties:**

**naming mice according to where they are  
harboring within apartments.**

# **Mouse nests inside apartments**

- 1. Warm floor voids beneath radiators**
- 2. The canyons and caves of the kitchen**
- 3. Furniture voids (couches, chairs)**
- 4. Wall voids**
- 5. Cluttered boxes in closets**
- 6. Pantry boxes out of reach and forgotten.**

**(like bed bugs..... only a bit more space).**

# Kitchen Mice

## 1. Kitchen appliance mice

Stoves (broiler voids/bases, insulated walls, burner plate void)

Refrigerator (mostly compressor motor void)

Dishwasher (same as refrigerator mice)

## 2. Kitchen sink cabinet base (below all components of the “sink” cabinets).

3. **Kitchen wall mice** (Usually behind any warmth-generating appliance above and esp. where unsealed plumbing lines, gas lines and electrical lines enter walls as the mice used the gaps around the unsealed lines to invade and nest within the wall voids.

4. **Pantry mice** (walls, ceilings, old unused food boxes, etc.).

# Appliance Canyons and Caves



**Stove**  
**Dishwasher**  
**Refrigerator**  
**Sink Cabinet Base**  
**Void**



Imagery on the refrigerator door, including a heart-shaped magnet, a photo of a family, and various small notes and magnets.

**Bat Rabies Alert**  
Bats are active in the area and may be carrying rabies virus. Avoid contact with bats. If you find a bat, do not touch it. Call your local health department for more information.

8:58





Growing Green Lawns  
www.growinggreenlawns.com.au





<b>MODEL NO.</b>		<b>SERIAL NO.</b>	
J B255D J1WW		GG264255P	
		120/ 240V 60 Hz	120/ 208V 60 Hz
<b>KILOWATTS</b>	11,7	8,8	
<b>INPUTS @ 240 V</b>		<b>WATTS</b>	
6" TOP UNIT		1 500	
8" TOP UNIT		2 600	
--		--	
--		--	
<b>BAKE UNIT</b>		2 585	
<b>BROIL UNIT</b>		3 410	

 **General Electric Company**  
Louisville, KY, 40225

 **UL LISTED**

HOUSEHOLD ELECTRONIC RANGE 28TW  
MADE IN MEXICO 222D8667P011







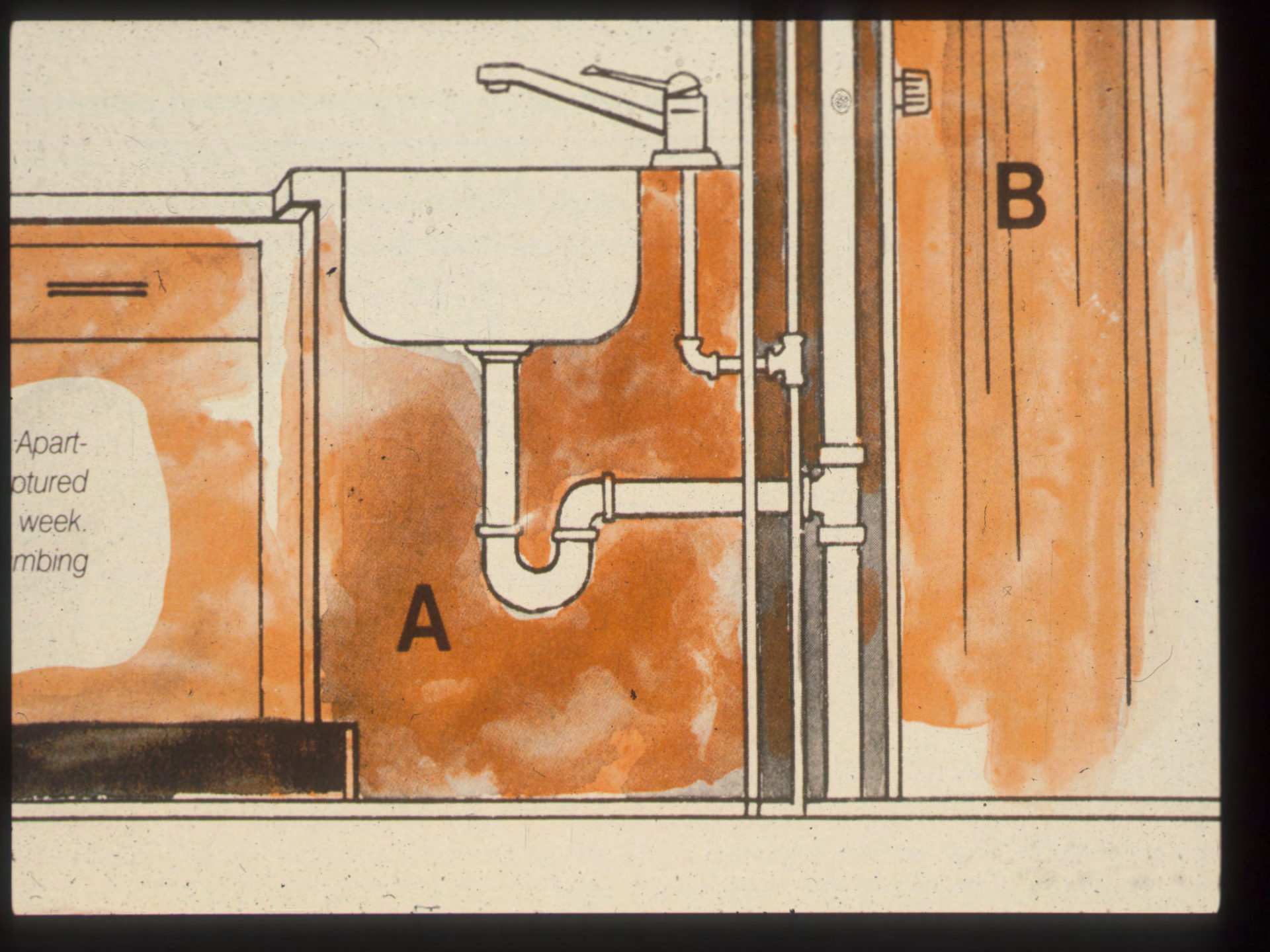
Technical Specifications  
Model No. 1000  
Serial No. 1000  
Capacity 1000  
Voltage 115V  
Power 1000W  
Frequency 60Hz  
Weight 1000g  
Dimensions 1000x1000x1000  
MADE IN MEXICO



Apartment  
rented  
week.  
mbing

**A**

**B**





pour le plus angles d'information  
1000000

# Heating register mice







# 3. Box Clutter Mice

3.



Greenies  
Pill  
Pockets

Greenies  
Pill  
Pockets

Greenies  
Pill  
Pockets

Greenies  
Pill  
Pockets

Greenies  
Pill  
Pockets

Greenies  
Pill  
Pockets



★★★★★  
**Fecal Diagnostic Kit**  
MANUFACTURED FOR & DISTRIBUTED BY  
FIVE STAR SUPPLIES CORP  
1301 WEST ELIZABETH AVENUE LINDEN NJ 07036

**Fecal Diagnostic Kit**  
MANUFACTURED FOR & DISTRIBUTED BY  
FIVE STAR SUPPLIES CORP  
1301 WEST ELIZABETH AVENUE LINDEN NJ 07036

MADE IN CHINA

Vet Script  
Prescription Vials  
VET-08  
8 GREEN  
DRAM  
PULL DOWN  
ACCESS  
WINDOW

Baxter



# 4. Furniture Mice



**Refuse room mice**



# Control (IPM)

Controlling this *public health* urban rodent takes cooperation:

And it truly is **integrated** among affected parties:

1. **Property Owner**
2. Building Supers / Maintenance
3. **Apartment Tenants**
4. Contracted Pest Professionals.

**Pest Exclusion is Pest  
Prevention**

**and.....**

**Pest Prevention is  
Public Health.**

**1. Mouse exclusion is  
smartest ....  
and not difficult nor expensive**





Correctly excluding mice;  
Door Sweeps  
Good high quality caulks (sealants)  
Not foam  
  
(e.g., Xcluder, Sealeze brushes).

A weather strip is not a pest strip!!

Rodents gnaw; air currents do not.







and 3/4in/19mm in width. (Figure 3-2) Note:

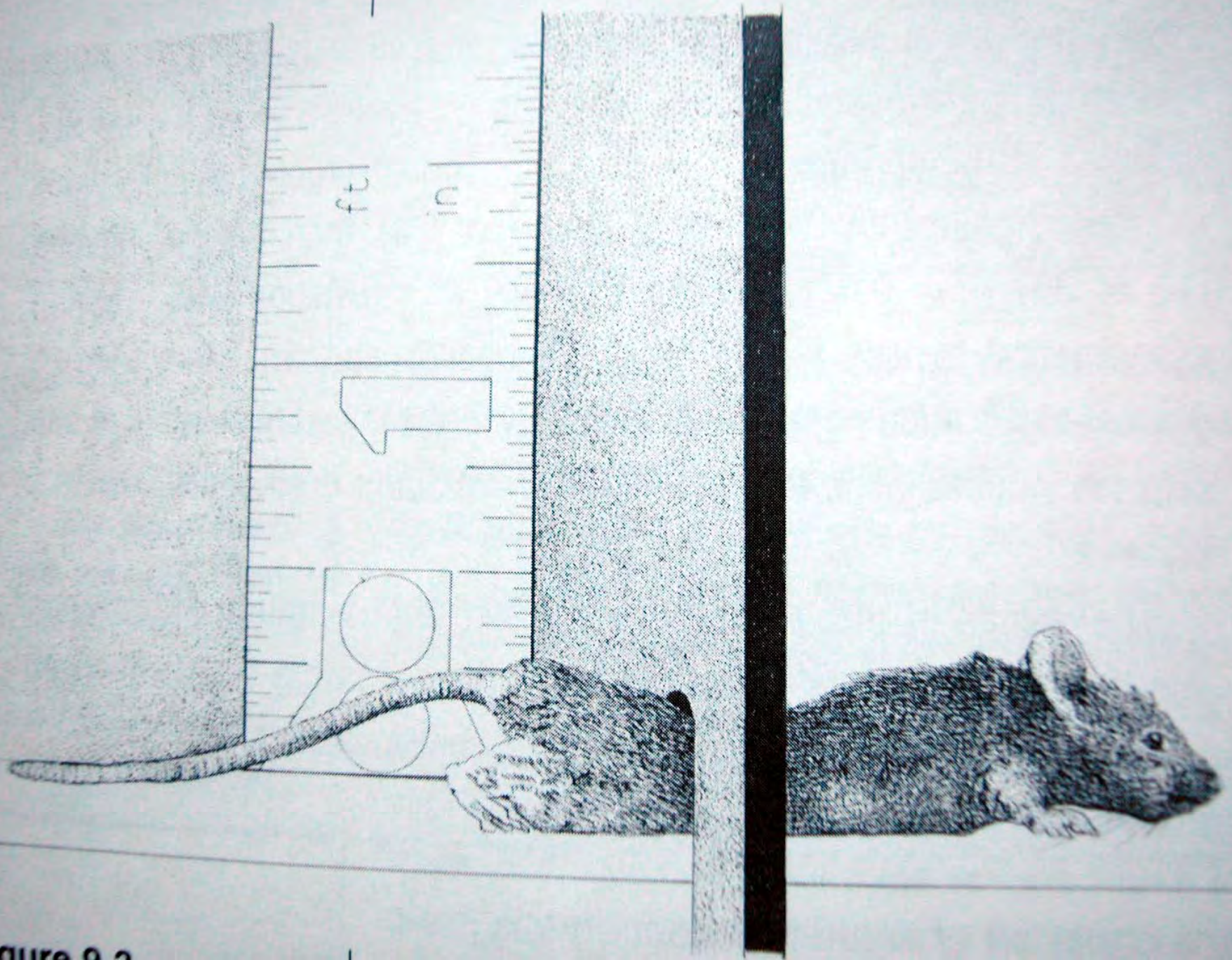


Figure 3-2



PLEASE  
USE  
REVOLVING  
DOORS











DO NOT TOUCH  
HOT WATER  
DO NOT TOUCH  
DO NOT TOUCH



## **2. Sanitation and De cluttering and general clean up (detail cleaning to zero crumbs)**

**Boxes are key**

**Furniture in all rooms**

**All appliances in kitchen**

**3. Mouse traps are effective  
for minor infestations  
but are best done by an  
experience pest professionals**

**homeowners can set traps and  
catch a few ; but may not be  
experienced to do more than  
“harvest” a few.**

**Maybe , 1 to 2 mice under the  
kitchen sink could be done by  
a DIY.....**

**Maybe.....**

**(but if one mouse is pregnant  
female, and the DIY  
misses.....**

**..... Mice reproduce very quickly.**



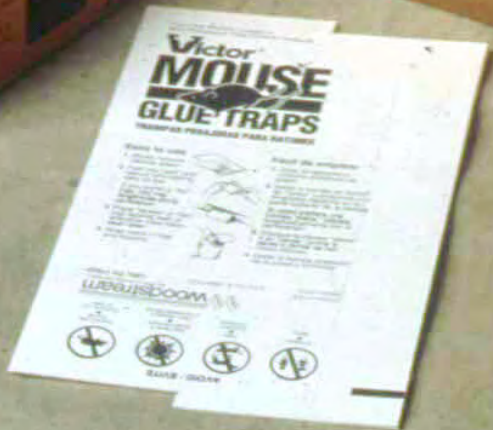






## A few mice in a house:

- ❖ 1. 2 beneath sink
- ❖ 2 behind stove
- ❖ 2 behind refrig
- ❖ 4-6 garage (nearby w. heater)
- ❖ Sill plate in basement (feces inspection)
- ❖ Attic within arms reach



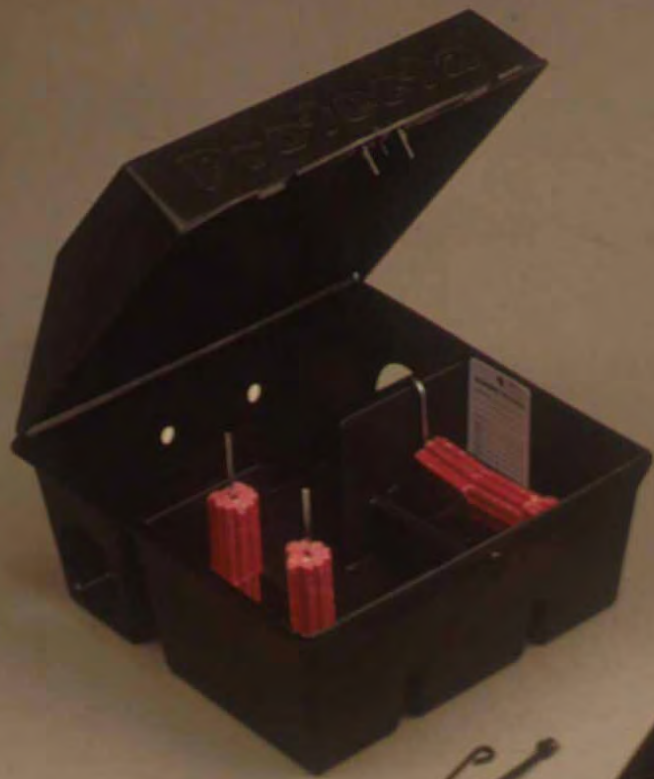


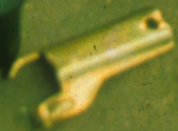
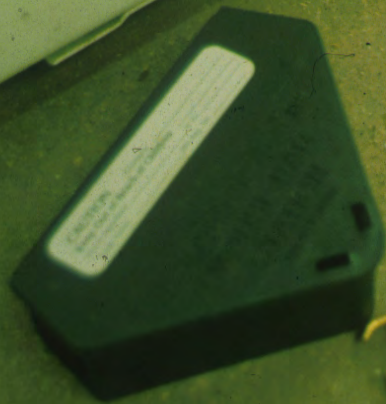


**3. Mouse baits are appropriate for the more on-going chronic infestations.**

**And if used professionally with professional bait stations are safe and efficient strategies.**















**Anyone (homeowner, super, or exterminator, custodian, etc.) that “tosses” poison mouse baits around anywhere is **illegally** applying a pesticide, and of course posing hazards to children, pets and/or wildlife .**

1/4" Flare nut  
If your water line has a flare nut at the end, you need to cut the tubing with a tube cutter before you can use the compression nut and ferrule (sleeve).  
(Adapter needed)  
Or you can use an adapter (available at plumbing supply stores) to connect the water line.

### INSTALLING THE WATER LINE

Complete installation instructions are included in the owner's manual for the unit and cover guide. For the water supply line, tubing or fittings, use only those that meet the requirements listed in the owner's manual, including the model.

**\*IMPORTANT:** Use the metal clamp to secure the copper tubing to the back of the refrigerator.  
After connecting the water line, fold the back into place and reinstall the screws.

This refrigerator will accept accessories from the manufacturer.





Not massive applications of the  
Restricted-use -Pesticides  
e.g., mouse "dusts".  
(i.e., tracking powders)

be very careful of any exterminator  
touting they will apply liberal amounts  
to walls, floors, voids.....

**Ask to review labels and amounts....**

PURINA

# Friskies®



PRODUCT PHOTO: BOB

NET WT 16.2 OZ  
(4.01 LB) 459g

## GOLD FISH

Chicken, Beef & Liver Flavors

FOR CATS

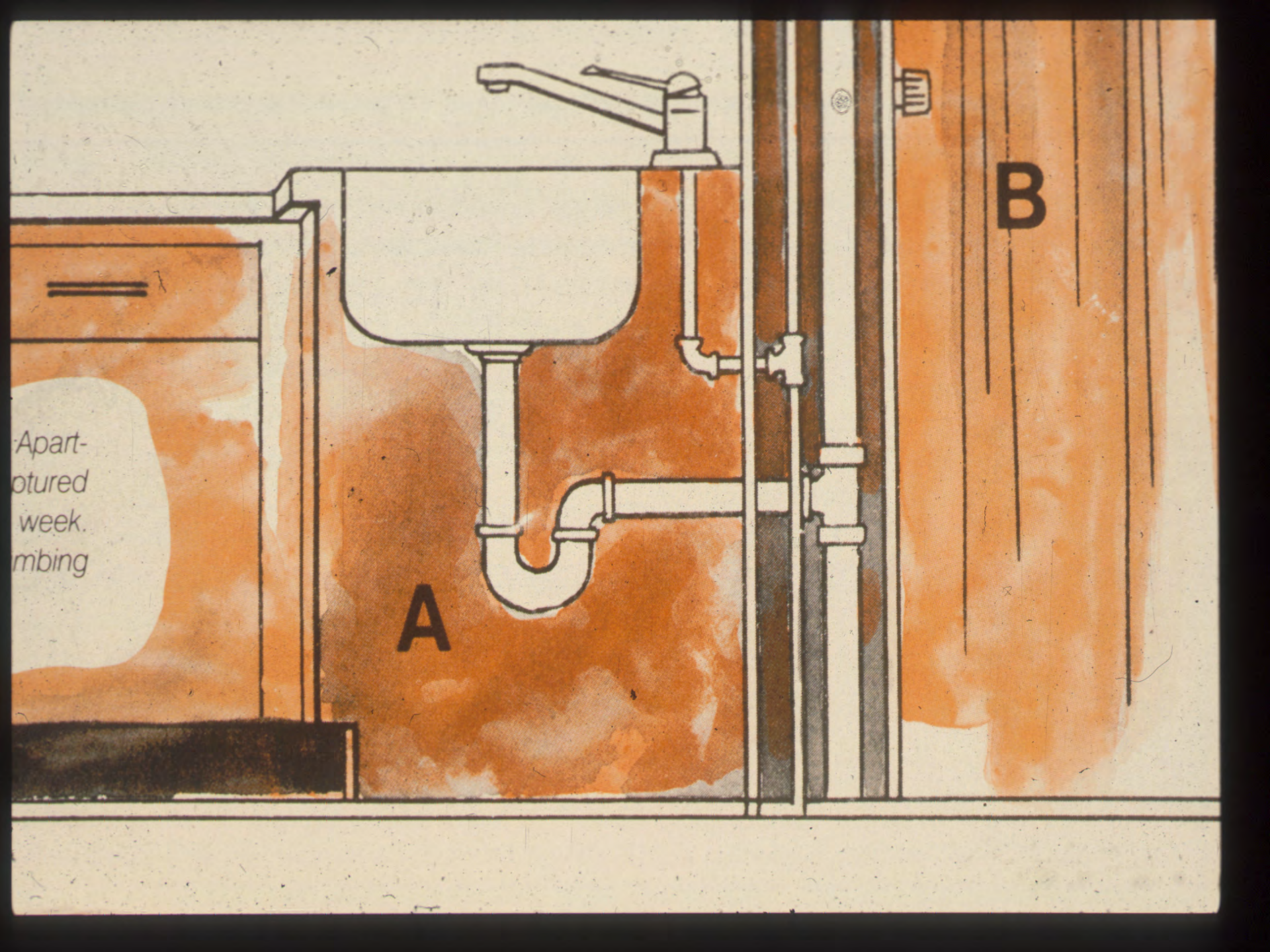




Apart-  
otured  
week.  
mbing

**A**

**B**



The monies we've come to realize **we must** spend to remediate for bed bugs, we **must also** spend for chronic mouse infestations.

**Avoid off-the-shelf gizmos or sprays or repellents that promise to rid a premises of pests just by plugging them in....or a simple spray-on**

**If there are no formal scientific data published to support it...  
Buyer beware.**

**Check with .edu sites and pest scientists when in doubt.**

**When multiple apartments are  
complaining.....**

**It is about **building populations**  
and apartment infestations  
as part of those building  
populations.**





Why do we **let** pests into our building  
and then try to kill them after they are in  
?

Lice, fleas, viruses, bacteria, etc.

If we aren't organized **first**,  
its not happening.....

No matter what trap, bait,  
pest professional,  
is used.

**Finger pointing is pointless.**









**When mice are present , they scurry over our work desks, kitchen, appliances, plates, beds, toys and clothes. In only one week, a single mouse can deposit thousands (literally) of micro-droplets of urine and hundreds of fecal pellets in our living spaces and/or onto the furniture and equipment in which we constantly touch with our hands and fingers (the primary human appendages in which we collect and then ingest**



**Pest Exclusion is Pest  
Prevention**

**and.....**

**Pest Prevention is  
Public Health.**

1. Each apartment is independent of the whole

1. Privacy rights at rodent reservoirs

2. Rarely are pest control services addressing the **population**; but rather the **complaints** (should there be regulations since these are public health pests and it is a case of second hand disease threats???).

- 4. Difficult to get the property owners to maintain the building and grounds as needs to be done to prevent rodents.**
- 5. Rodent proofing is not done at the building level nor at the apartment level.**
- 6. Ceiling and wall floor rodents are often not addressed due to time restraints due to low pest control markets**

**Always a slow boil: decades**

**“Maintenance” rodent  
programs**

**VS**

**Infestation management  
and population tracking**

**Most mouse infestations  
inside multi-family  
housing are harvested  
not eliminated.**



# **Mouse proofing an apartment**

- 1. Door sweeps**
- 2. Plumbing lines in kitchen  
(3)**
- 3. Bathroom (3)**
- 4. Gas lines**
- 5. Any floor / wall cables**
- 6. Radiator steam lines.**

**It is neither difficult nor expensive to mouse proof the average apartment.**

**(if it is done by someone that **truly** understands/experienced in pest proofing (Scope)).**







COLUMBIA UNIVERSITY POLICY  
SMOKING IS PROHIBITED OUTDOORS  
WITHIN 20 FEET OF ALL UNIVERSITY  
BUILDINGS





**Escutcheon plates**

**Quality sealants not  
caulks (shrinkage/  
gnawable edge)**

**Stainless steel fabric for  
holes and sweeps  
(e.g. Xcluder brand).**

# **Mouse Elimination (2)**

- 1. Snap Traps in mouse highways**
- 2. Block baits in RTUs**
- 3. Glue trap moats/disassemble clutter**

**Acceptable but not the best:**

**Caulks**

**Foam**

**“Brillo” pads**

**Copper mesh**





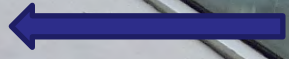






**The rodents use all the risers and utility chases as inter-floor highways.**

**These areas must be addressed to gain control.**







# **Preventing future infestations**

- A. Building envelope**
- B. Mouse-proof the  
apartment**
- C. Clutter control and  
detail clean**

**The prep work necessary  
for bedbug jobs is nearly  
identical to mouse jobs**



# Second Hand Mice

Feces (and micro-flora) onto  
food or food items.

Urine (and allergenic proteins)

Gnawing on items and wires

Ectoparasites onto humans

Hairs onto foods

Rodents move relatively easily and quickly between filthy streets, alleys, sewers, garbage cans, and dumpsters into.....

homes, multi-family hi-rise bldgs., restaurants, food plants, schools, hospitals, office buildings and hotels.

Obviously, urban mice (and rats) cannot be ruled out as public health threats.

# The house mouse as a health pest:

Allergens

**Rickettsialpox**

Lymphocytic choriomeningitis

**Congenital toxoplasmosis**

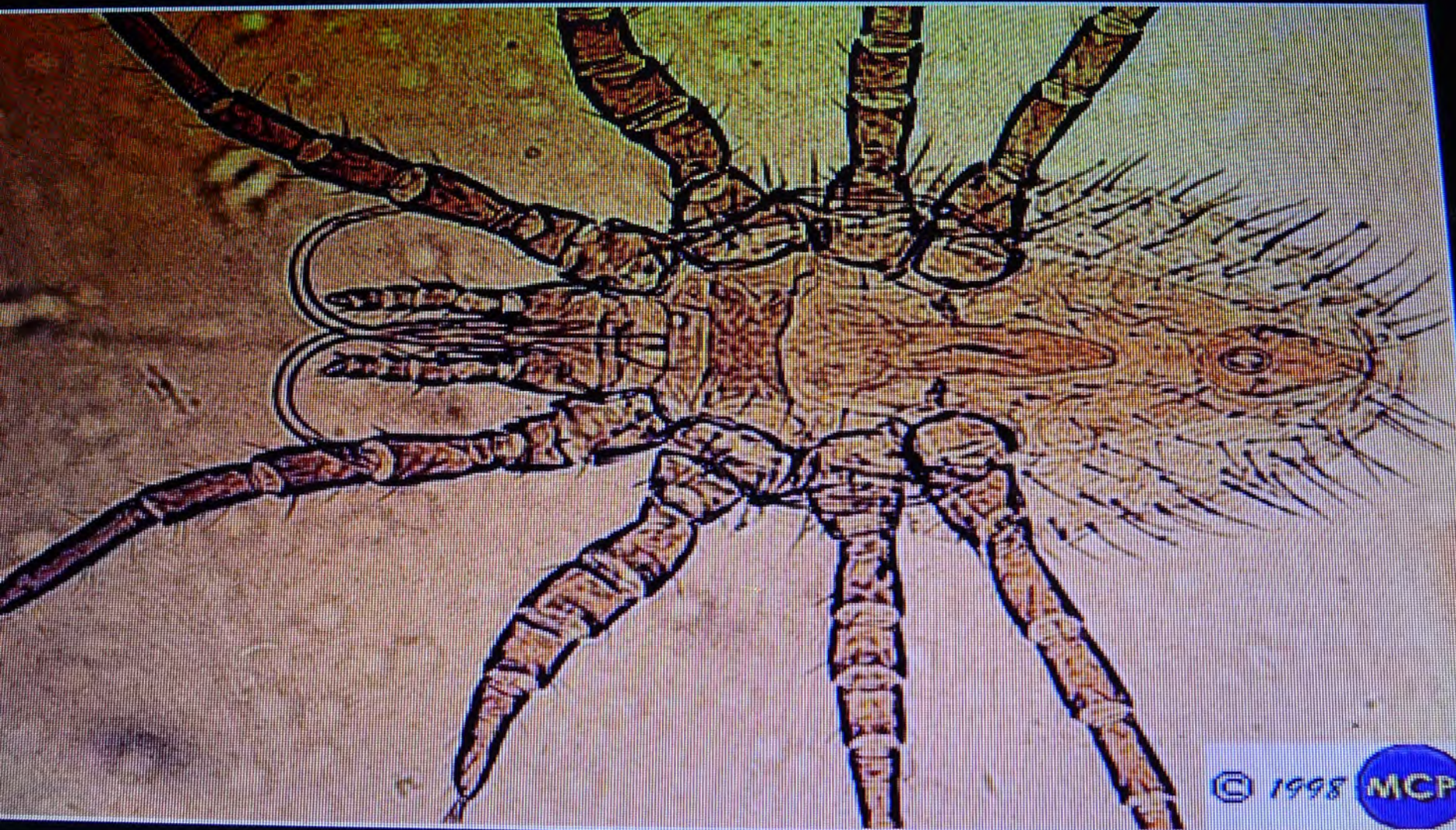
Food borne illness (Salmonella,  
campylobacter, etc.)

**Rat bite fever**

Others.....

The house mouse mite,  
*Liponyssoides sanguineus*  
common on mice, readily  
attacks people in buildings in  
which mice are living; causing  
dermatitis.

■



© 1998 MCP

# FOOD-BORNE ILLNESS.

## Asked of Dr. Michael Doyle, 2014

(Regents Professor of Food Microbiology, and Director, Center for Food Safety, University of Georgia) at the Nestle Purina 2014 Food Safety Symposium (Denver CO, September 23-25, 2013).

**Panelist: “Dr. Doyle, would you eat in a restaurant if there was only one mouse in the facility, but it was carrying *Salmonella enteriditus* ? ”**

**Dr. Doyle: “Probably not. Nor would you I presume.”**

Why do we **let** pests into our building  
and then try to kill them after they are in  
?

Lice, fleas, viruses, bacteria, etc.





Figure 16. A closer look at Figure 14. Mice living in stoves will drag the batting from the walls and use it for bedding in any nook and cranny of the stove's base –often in the back of the broiler pan's or the bottom pot/pan drawer of stoves. (Red arrow points to a mouse bed. The green arrow points to a amateurish attempt at using cheap foam spray to plug the walls holes that contain the electrical sockets and plugs. Mice actually love the foam for insulations and to make foam beds and the like.



Figure 11. Note the brown mouse smears on top of the radiator in the corner (red circle). Mice love such corners that are hidden behind heavy furniture (e.g., tv consoles, dressers, etc.). The smears contain heavy urine accumulation and thus large amounts of allergens that can affect the children of the apartment. The sticky traps laid down here will capture the occasional young mouse, but are not very effective in eliminating the overall mouse family units that likely are infesting several areas of the living room and surrounding rooms. For that, intensive snap trapping /poison baiting effort are necessary.

Thanks.