

Cockroaches

Cockroaches thrive in warm environments that provide food, water, and shelter.

Roaches hide in cracks, crawl spaces, and other dark places during the day and come out at night to feed. Pesticide sprays alone will not control roaches and are not usually required. Baits provide better control. You must integrate several strategies to make your home a less roach friendly environment. Thoroughness is essential for effective control.

Identify your cockroach species first:

- ◆ Effective management options vary according to species.
- ◆ Cockroach traps provide an easy way to catch roaches for identification.
- ◆ Control practices for outdoor invaders (American, oriental roaches) and indoor residents (brownbanded, German roaches) differ.
- ◆ For help with identification, go to www.ipm.ucdavis.edu.

Remove food and water sources:

- ◆ Even tiny crumbs or liquids in cracks provide good food sources.
- ◆ Store food in sealed containers.
- ◆ Keep trash in containers with tight lids.
- ◆ Eliminate plumbing leaks.
- ◆ Vacuum cracks and crevices, and clean floors and counters daily.

Remove roach hiding places:

- ◆ Seal cracks and other openings to prevent invaders from the outside.
- ◆ Seal cracks in false bottoms of cupboards and other indoor hiding places.
- ◆ Seal or clean up other areas where you find roaches or their egg cases hiding.
- ◆ Remove old newspapers, boxes, and other clutter in kitchens and bathrooms.
- ◆ The oriental cockroach hides outdoors under ivy and other shelter. Check to see if you have this roach, and remove outdoor hiding places or use bait.

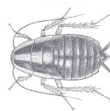


Use traps to identify and track populations:

- ◆ Traps are available in hardware stores.
- ◆ Place traps on the floor around edges of walls, in cupboards, and other places where you think roaches are foraging. Place bait stations at locations where you trap roaches.
- ◆ Check traps daily.
- ◆ Sticky traps with pheromones may provide some control of German cockroaches.

Using chemicals to control cockroaches:

- ◆ Avoid using foggers, bombs, or aerosol sprays. They just disperse populations.
- ◆ Boric acid powder blown into cracks, crevices, hollow walls, under refrigerators, or other undisturbed hiding places is very effective. (Allow 7 days or more to see an effect.)
- ◆ Bait stations containing boric acid, abamectin, fipronil, or hydramethylnon placed near hiding places can be effective if you remove other food sources. (Allow 7 days or more to see an effect.) Replace stations as needed as long as they are catching roaches.
- ◆ Insecticide sprays alone don't give long-term control. They aren't necessary if other methods such as baits and boric acid powder are combined with cleaning up and removing hiding places.
- ◆ Contact a professional pest control operator for very serious infestations, but be sure they use an integrated program as described above.



German
cockroach
nymph



German
cockroach
adult

Minimize the use of pesticides that pollute our waterways. Use nonchemical alternatives or less toxic pesticide products whenever possible. Read product labels carefully and follow instructions on proper use, storage, and disposal.

For more information about managing pests, contact your local Cooperative Extension office listed in your phone book or at www.csrees.usda.gov/Extension/index.html. If you have a question about choosing a pesticide, contact the National Pesticide Information Center at **1-800-858-7378** or via e-mail at npic@ace.orst.edu.

University of California
Statewide IPM Program
www.ipm.ucdavis.edu



www.StopPests.org

What you use in your home affects the health of those around you!