

House Mouse

House mice are well-adapted to living in close contact with humans and thrive where food and shelter are abundant. They eat and contaminate food supplies and also can transmit disease. Their gnawing activities may damage structures or property. Manage them by cleaning up debris, removing food and shelter, eliminating entryways into buildings, or using traps or baits. High frequency electronic devices are not effective.

How to detect a house mouse infestation:

- ◆ **Look for droppings, fresh gnaw marks, and tracks, which indicate areas where mice are active.**
- ◆ **Search behind boxes, in drawers, in garages, or around woodpiles for nests made of finely shredded paper or other fibrous material.**
- ◆ **Check for musky odors associated with mice.**
- ◆ **Mice are most active at night, but you can see them during daylight hours.**

Discourage mice by removing food, water, and shelter and sealing entryways.

- ◆ **Good housekeeping within buildings reduces shelter and food for house mice.**
- ◆ **Seal all structural cracks and openings larger than ¼ inch. Use wire screen or coarse steel wool that mice can't chew through.**
- ◆ **Ensure doors, windows, and screens fit tightly.**
- ◆ **Feed pets only the amount of food they will eat at a single feeding.**
- ◆ **Seal all food storage and garbage containers.**
- ◆ **Thin or remove plants next to or climbing up buildings, since house mice are excellent climbers.**

Remove mice from your home by trapping.

- ◆ **Snap traps and glue boards are the safest and most economical.**
- ◆ **Place traps in secluded areas along walls, behind objects, in dark corners, and in places where you find droppings.**
- ◆ **Bury dead rodents or place them in plastic bags and put them in the garbage. Do not touch mice with your bare hands, and wash hands thoroughly after handling traps.**



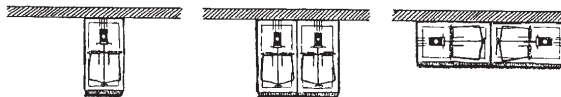
What about poison baits?

- ◆ **Avoid using baits indoors. Mice can die in hidden places, create bad odors, and be difficult to locate. Seal buildings before baiting outdoors to prevent mice coming indoors to die.**
- ◆ **Baits generally take several days for effective control.**
- ◆ **Place baits in tamper-proof bait stations out of reach of children and pets. All rodent baits are toxic.**

See **Pest Notes: House Mouse** at www.ipm.ucdavis.edu for complete instructions on carrying out these practices.



The house mouse (left) has almost no hair on its tail and no white markings. The carrier of the deadly hantavirus, the deer mouse (right), has a white underside, more hair on its tail, and is rare in homes.



Set traps with the trigger next to the wall. Increase your chance of success by setting two.

Minimize the use of pesticides that pollute our waterways. Use nonchemical alternatives or less toxic pesticide products whenever possible. Read product labels carefully and follow instructions on proper use, storage, and disposal.

For more information about managing pests, contact your local Cooperative Extension office listed in your phone book or at www.csrees.usda.gov/Extension/index.html. If you have a question about choosing a pesticide, contact the National Pesticide Information Center at **1-800-858-7378** or via e-mail at npic@ace.orst.edu.

University of California
Statewide IPM Program
www.ipm.ucdavis.edu



www.StopPests.org

What you use in your home affects the health of those around you!