


# Conclusions and Next Steps

*Northeastern*  
**IPM** Allison Taisey  
Center

The Northeastern IPM Center

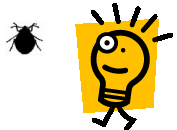
and

you (  )

The person who makes it happen

# Selling Points for IPM



- 🐜 A system-wide approach to pest control that synergizes the efforts of maintenance, social workers, and pest control
- 🐜 Has potential for great PR: partnerships, happy residents, higher inspection scores = more funding, "healthy", "sustainable", and "green"
- 🐜 There is a business case: reduced transfer requests, reduced pest work orders, increased satisfaction with housing, cheaper in the long run
- 🐜 IPM is a healthy and sustainable approach to reducing asthma triggers
- 🐜 In the near future, IPM will be the required standard practice for pest control
- 🐜 HUD webcast on IPM: [www.hud.gov/webcasts/archive/multifamily.cfm](http://www.hud.gov/webcasts/archive/multifamily.cfm)
- 🐜 It's not rocket science...it's cockroaches: take their food, water, shelter, and access points away
- 🐜 NO ONE has to live with pests!









# IPM is...

- An approach to pest control that uses the most economical means with the least possible hazard to people, property, and the environment
- A healthy approach to pest control
  - Take measures to prevent infestations from growing
  - Eliminate the source of the problem while utilizing reduced risk pesticides if appropriate
  - Monitor and inspect regularly (in place of applying pesticides regularly) so that pest problems are dealt with quickly and efficiently

# Next Steps

- 🐛 Partner with local support organizations: faith-based, public health, asthma, universities, each other, and 
- 🐛 Find resources that are already developed: pest factsheets, model RFPs, guidelines, training slides at [stoppests.org](http://stoppests.org), and 

# Next Steps

-  Set up your "IPM Team:" property manager, maintenance staff, resident support services, pest control contractor, residents, and local support groups
  -  Encourage communication through documentation procedures
  -  Educate EVERYONE to think like a pest – know the enemy
  -  Focus efforts on accessing, inspecting, and getting resources to pest reservoirs
    - Trash handling areas
    - Homes of hoarders
    - Homes of the disabled
    - Homes in which illegal activities are occurring (privacy)
    - 
-  Communicate success stories by e-mailing [aat25@cornell.edu](mailto:aat25@cornell.edu)

# A SAMPLE of Resources

- 🐞 E-mail [bedbugworks@gmail.com](mailto:bedbugworks@gmail.com) for bed bug recommendations report  
(will be released in the next 2 months)
- 🐞 Download training slides and resources from [www.stoppests.org](http://www.stoppests.org)
  - 🐞 T4: pdf notes for trainers
  - 🐞 IPM in MFH: ppts and resources
  - 🐞 Resident Briefing: video and IPM tools
- 🐞 Get more information from state IPM programs such as [www.nysipm.cornell.edu/whats\\_bugging\\_you/default.asp](http://www.nysipm.cornell.edu/whats_bugging_you/default.asp)

A small brown mouse is peering out from a slot in an HP LaserJet printer. The mouse is looking directly at the camera with its mouth slightly open. The printer is black and has a blue label at the bottom that reads "hp LaserJet C". The mouse is positioned in the center of the frame, between two horizontal rollers. The background is a plain, light-colored surface.

The End