

Community IPM

Bed Bug Management

Prepare for a Visit by a Pest Management Professional

Matthew Frye, New York State Integrated Pest Management Program, Cornell University

Consider contacting a pest control service if you or a family member is suffering from bites, or if you have seen evidence of a bed bug infestation (See Step 1). Select a company based on their qualifications, experience, reputation, value, customer service and safety. For more information, visit <http://npic.orst.edu/pest/selectpco.html>

1

Ask a professional what you should and should not do before a visit.



2

Sleeping in a new location, discarding a mattress or using bug bombs can disperse bed bugs from the bedroom.



3 Collect a sample for identification.



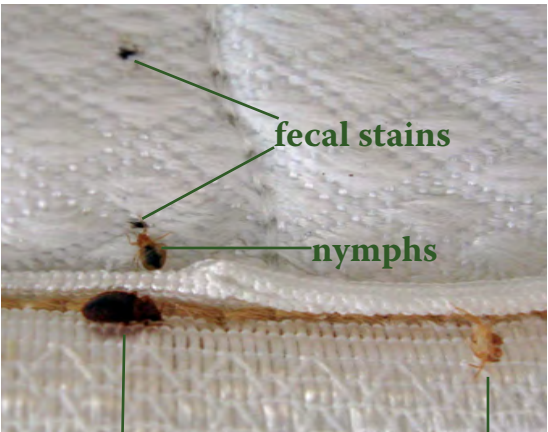
4 Some companies train dogs to identify where bed bugs are present or absent.



5 Visual inspections are used to confirm the presence of bed bugs.



6 Ask the technician to show you bed bug evidence found during an inspection



fecal stains

nymphs

adult bug

cast skins

7 As the homeowner, you may be asked to prepare your home before the treatment. Follow instructions carefully.



8 The professional should describe the treatment in detail and answer your questions.



9

Review your contract. It should include bed bugs as the target pest, the procedure and cost.



10

Wash and dry bedding (see Step 5).



11

Empty drawers, wash and dry clothing.



12

Remove switch plate covers.



13

Move furniture 18 inches away from walls .



14

Place pictures in clear plastic bag.



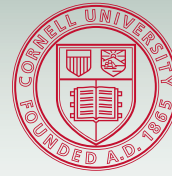
15

Expect to be out of your home for several hours. For a traditional chemical treatment, you can enter when the product is dry, typically 4 hours after the treatment ends.

NOON



4 pm



Cornell University
Cooperative Extension



Produced by the New York State Integrated Pest Management Program, which is funded through Cornell University, Cornell Cooperative Extension, the New York State Department of Agriculture and Markets, the New York State Department of Environmental Conservation, and USDA-NIFA. Illustration and design by Karen English, New York State IPM Program. Cornell Cooperative Extension provides equal program and employment opportunities. © 2013 Cornell University and the New York State IPM Program. Posted 11/2013 at www.nysipm.cornell.edu/factsheets/buildings/bb_mgmt_steps/visit.pdf



For more information, see: *What's Bugging You? Bed Bugs*



See other *Bed Bug Management* Fact Sheets